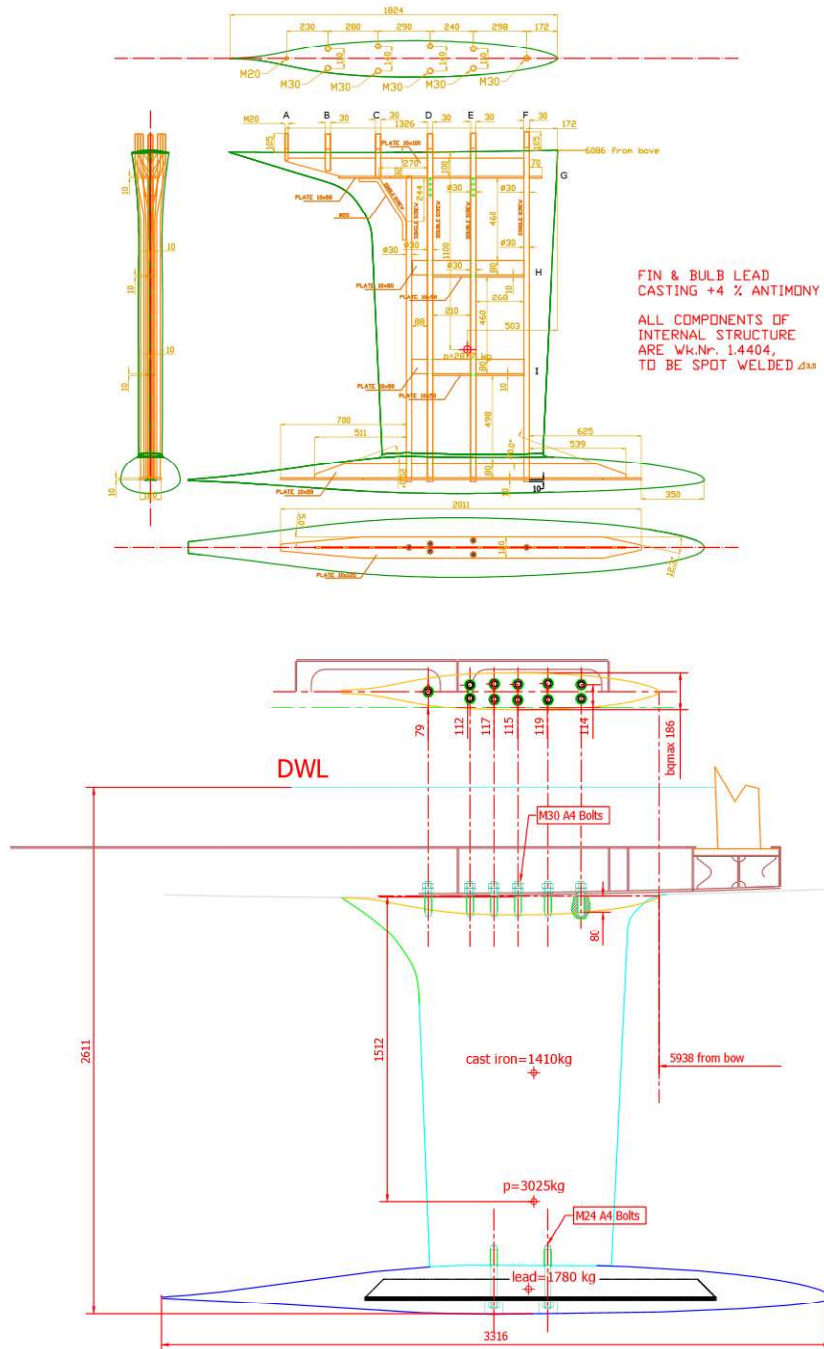


Salona 460 VPP



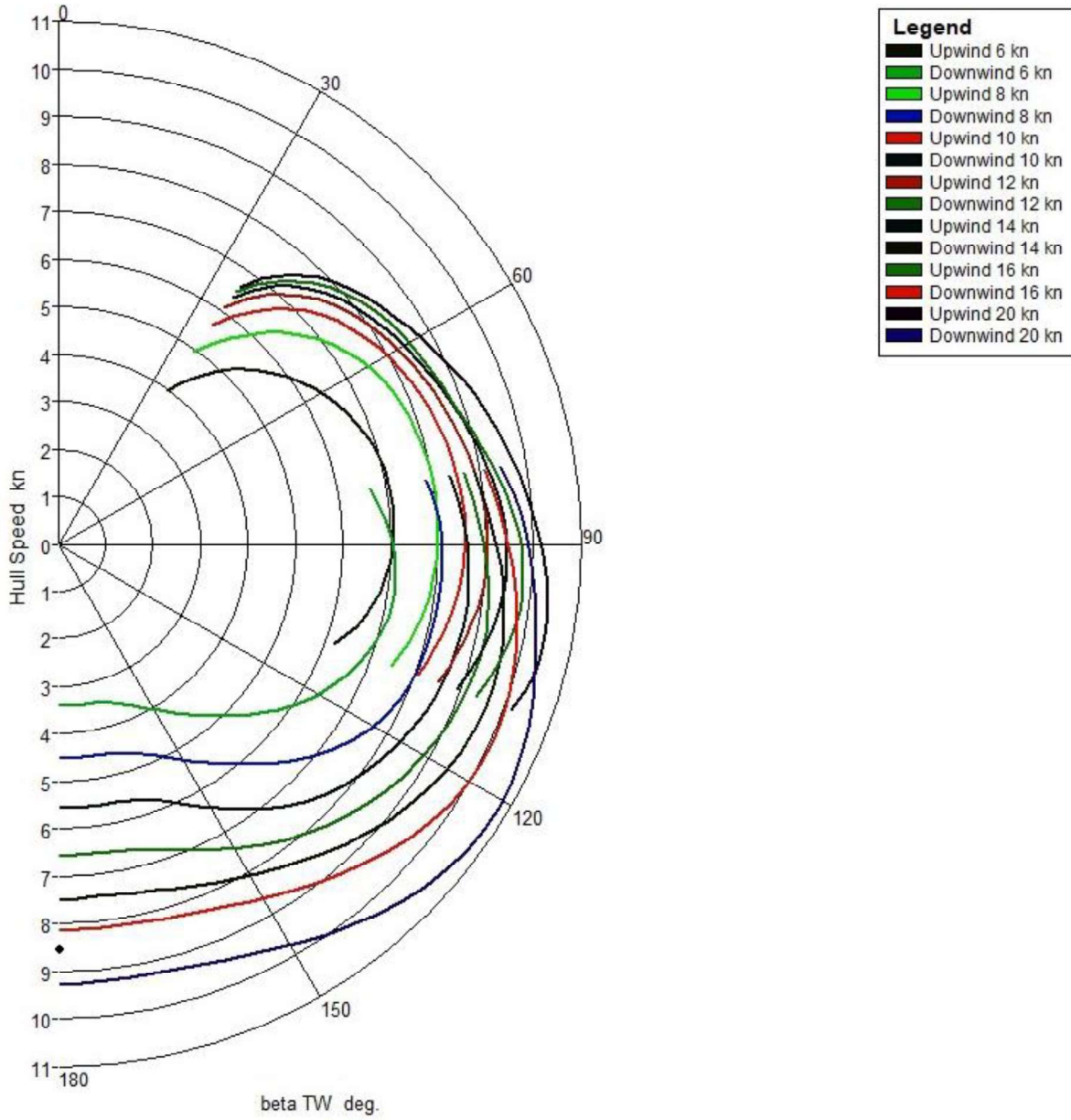
Appendages

| Keel | Draft from DWL (m) | Weight (kg) | VCG (m) |
|-------------|--------------------|-------------|---------|
| Standard | 2.44 | 2887 | -1.100 |
| Performance | 2.61 | 3025 | -1.512 |



Polar Diagrams

Standard Keel



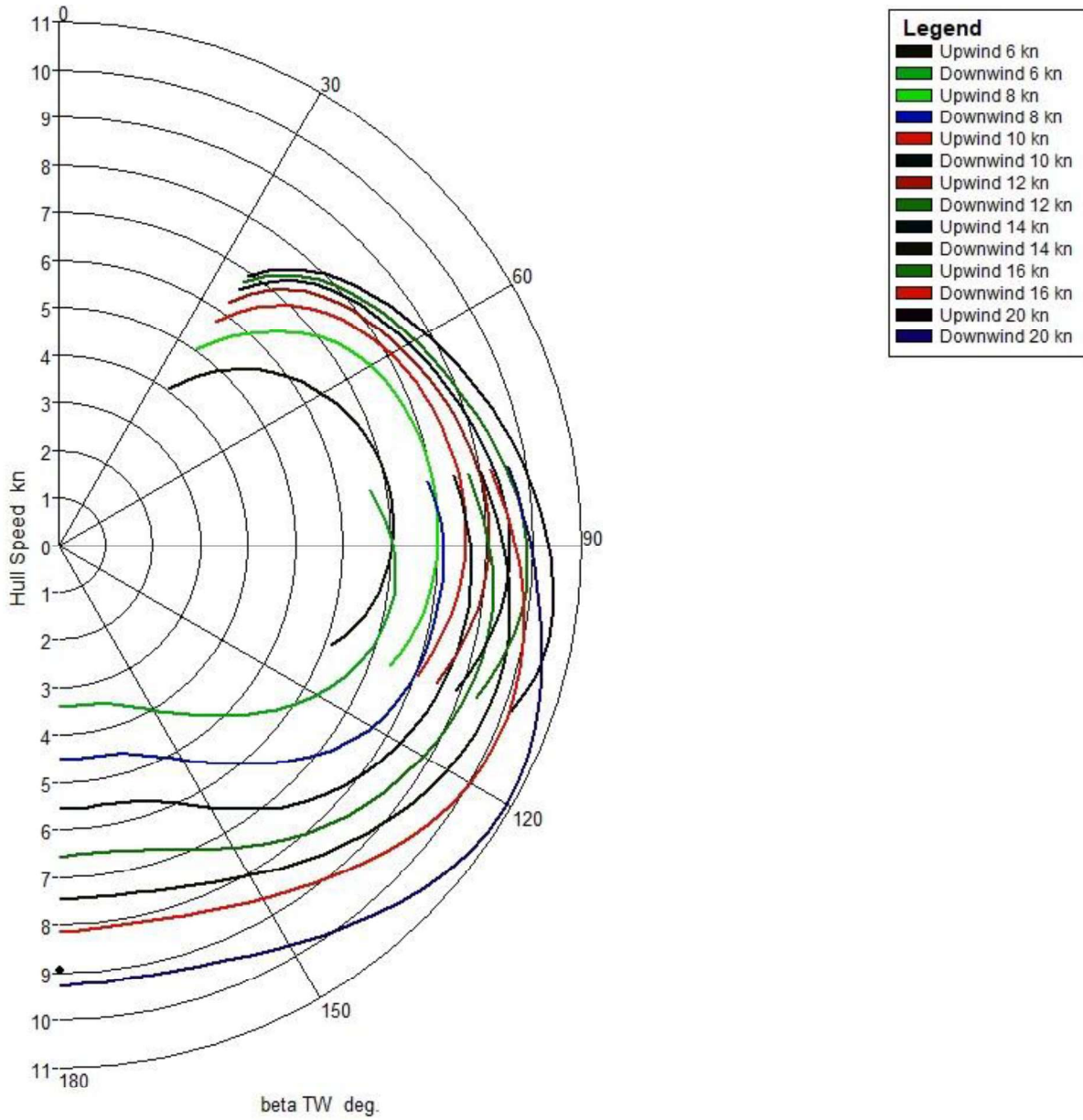
| V TW kn | beta TW deg | Spinnaker | V AW kn | beta AW deg | Hull Speed kn | VMG kn | Heel Angle deg | Fwd Force kN | Sideforce kN | Reef | Flat |
|---------|-------------|-----------|---------|-------------|---------------|--------|----------------|--------------|--------------|------|------|
| 6 | 35 | down | 9.45 | 20.98 | 3.95 | 3.24 | 7.38 | 0.4 | 2.47 | 1 | 0.92 |
| 6 | 39 | down | 9.85 | 22 | 4.52 | 3.51 | 9.35 | 0.5 | 2.9 | 1 | 0.98 |
| 6 | 42 | down | 10.09 | 22.81 | 4.88 | 3.63 | 10.32 | 0.58 | 3.11 | 1 | 1 |
| 6 | 45 | down | 10.27 | 23.68 | 5.2 | 3.68 | 10.92 | 0.65 | 3.23 | 1 | 1 |
| 6 | 50 | down | 10.47 | 25.19 | 5.66 | 3.64 | 11.61 | 0.76 | 3.36 | 1 | 1 |
| 6 | 60 | down | 10.61 | 28.3 | 6.37 | 3.19 | 12.04 | 0.96 | 3.42 | 1 | 1 |
| 6 | 75 | down | 10.21 | 33.53 | 6.97 | 1.81 | 10.6 | 1.15 | 3.1 | 1 | 1 |
| 6 | 90 | down | 9.17 | 40.06 | 7.02 | 0 | 7.29 | 1.15 | 2.39 | 1 | 1 |
| 6 | 100 | down | 8.18 | 45.58 | 6.76 | -1.17 | 4.86 | 1.03 | 1.79 | 1 | 1 |
| 6 | 110 | down | 6.93 | 53.71 | 6.14 | -2.1 | 3.14 | 0.82 | 1.13 | 1 | 1 |
| 6 | 80 | up | 9.67 | 37.26 | 6.65 | 1.16 | 9.7 | 1.02 | 2.62 | 1 | 1 |
| 6 | 90 | up | 9.2 | 40.22 | 7.02 | 0 | 10.11 | 1.16 | 2.68 | 1 | 1 |
| 6 | 100 | up | 8.43 | 44.16 | 7.1 | -1.23 | 8.71 | 1.18 | 2.4 | 1 | 1 |
| 6 | 110 | up | 7.42 | 49.53 | 6.88 | -2.35 | 5.91 | 1.08 | 1.85 | 1 | 1 |
| 6 | 120 | up | 6.15 | 58.08 | 6.28 | -3.14 | 3.65 | 0.87 | 1.19 | 1 | 1 |
| 6 | 130 | up | 4.9 | 70.79 | 5.5 | -3.53 | 2.22 | 0.63 | 0.66 | 1 | 1 |
| 6 | 140 | up | 3.89 | 89 | 4.7 | -3.6 | 1.2 | 0.44 | 0.31 | 1 | 1 |
| 6 | 150 | up | 3.27 | 112.61 | 3.98 | -3.44 | 0.58 | 0.3 | 0.14 | 1 | 1 |
| 6 | 165 | up | 2.85 | 146.7 | 3.46 | -3.34 | 0.23 | 0.23 | 0.05 | 1 | 1 |
| 6 | 175 | up | 2.7 | 168.76 | 3.37 | -3.36 | 0.09 | 0.21 | 0.02 | 1 | 1 |
| 6 | 180 | up | 2.65 | 180 | 3.39 | -3.39 | -0.03 | 0.22 | -0.01 | 1 | 1 |
| 8 | 35 | down | 12.25 | 21.08 | 4.95 | 4.06 | 13.79 | 0.64 | 3.84 | 1 | 0.85 |
| 8 | 39 | down | 12.61 | 22.24 | 5.54 | 4.3 | 16.2 | 0.79 | 4.29 | 1 | 0.89 |
| 8 | 42 | down | 12.81 | 23.11 | 5.92 | 4.4 | 17.73 | 0.9 | 4.56 | 1 | 0.91 |
| 8 | 45 | down | 12.97 | 23.96 | 6.28 | 4.44 | 19.06 | 1.01 | 4.77 | 1 | 0.93 |
| 8 | 50 | down | 13.14 | 25.36 | 6.82 | 4.38 | 20.89 | 1.18 | 5.05 | 1 | 0.96 |
| 8 | 60 | down | 13.05 | 28.93 | 7.49 | 3.75 | 21.91 | 1.51 | 5.16 | 1 | 1 |
| 8 | 75 | down | 12.32 | 36.09 | 7.91 | 2.05 | 17.69 | 1.84 | 4.44 | 1 | 1 |
| 8 | 90 | down | 11.11 | 44.21 | 7.96 | 0 | 11.95 | 1.85 | 3.35 | 1 | 1 |
| 8 | 100 | down | 10.06 | 50.28 | 7.8 | -1.36 | 7.97 | 1.67 | 2.52 | 1 | 1 |
| 8 | 110 | down | 8.8 | 57.65 | 7.43 | -2.54 | 4.56 | 1.35 | 1.67 | 1 | 1 |
| 8 | 80 | up | 11.84 | 38.87 | 7.83 | 1.36 | 19.28 | 1.75 | 4.23 | 1 | 1 |
| 8 | 90 | up | 11.05 | 43.31 | 8.04 | 0 | 18.61 | 1.96 | 4.1 | 1 | 1 |
| 8 | 100 | up | 10.15 | 48.83 | 8.07 | -1.4 | 14.78 | 1.98 | 3.47 | 1 | 1 |
| 8 | 110 | up | 9.07 | 55.11 | 7.94 | -2.71 | 10.19 | 1.81 | 2.65 | 1 | 1 |
| 8 | 120 | up | 7.81 | 62.72 | 7.61 | -3.8 | 5.84 | 1.49 | 1.82 | 1 | 1 |
| 8 | 130 | up | 6.42 | 73.75 | 6.98 | -4.48 | 3.42 | 1.11 | 1.09 | 1 | 1 |
| 8 | 140 | up | 5.18 | 91.89 | 6 | -4.6 | 1.86 | 0.78 | 0.53 | 1 | 1 |
| 8 | 150 | up | 4.41 | 113.89 | 5.2 | -4.5 | 0.97 | 0.55 | 0.25 | 1 | 1 |
| 8 | 165 | up | 3.83 | 147.02 | 4.57 | -4.42 | 0.4 | 0.41 | 0.09 | 1 | 1 |
| 8 | 175 | up | 3.64 | 168.86 | 4.46 | -4.45 | 0.16 | 0.39 | 0.04 | 1 | 1 |
| 8 | 180 | up | 3.57 | 180 | 4.49 | -4.49 | -0.06 | 0.39 | -0.01 | 1 | 1 |
| 10 | 35 | down | 14.69 | 21.26 | 5.63 | 4.61 | 19.33 | 0.86 | 4.86 | 1 | 0.75 |
| 10 | 39 | down | 15.01 | 22.5 | 6.24 | 4.85 | 21.64 | 1.03 | 5.21 | 1 | 0.76 |

| V TW kn | beta TW deg | Spinnaker | V AW kn | beta AW deg | Hull Speed kn | VMG kn | Heel Angle deg | Fwd Force kN | Sideforce kN | Reef | Flat |
|---------|-------------|-----------|---------|-------------|---------------|--------|----------------|--------------|--------------|------|------|
| 10 | 42 | down | 15.2 | 23.43 | 6.65 | 4.95 | 23.01 | 1.15 | 5.4 | 1 | 0.77 |
| 10 | 45 | down | 15.3 | 24.41 | 7.01 | 4.95 | 24.11 | 1.28 | 5.53 | 1 | 0.78 |
| 10 | 50 | down | 15.29 | 26.26 | 7.42 | 4.77 | 25.47 | 1.49 | 5.69 | 1 | 0.8 |
| 10 | 60 | down | 14.86 | 30.39 | 7.94 | 3.97 | 27.21 | 1.93 | 5.88 | 1 | 0.89 |
| 10 | 75 | down | 13.9 | 38.03 | 8.41 | 2.18 | 25.09 | 2.49 | 5.57 | 1 | 1 |
| 10 | 90 | down | 12.74 | 47.97 | 8.53 | 0 | 16.45 | 2.6 | 4.2 | 1 | 1 |
| 10 | 100 | down | 11.66 | 55.25 | 8.37 | -1.45 | 10.73 | 2.34 | 3.09 | 1 | 1 |
| 10 | 110 | down | 10.36 | 63.51 | 8.02 | -2.74 | 5.8 | 1.88 | 2.03 | 1 | 1 |
| 10 | 80 | up | 13.21 | 40.49 | 8.33 | 1.45 | 28.34 | 2.36 | 5.36 | 1 | 0.97 |
| 10 | 90 | up | 12.32 | 45.94 | 8.57 | 0 | 26.74 | 2.69 | 5.14 | 1 | 1 |
| 10 | 100 | up | 11.52 | 52.97 | 8.67 | -1.51 | 20.69 | 2.8 | 4.35 | 1 | 1 |
| 10 | 110 | up | 10.48 | 60.7 | 8.56 | -2.93 | 14.21 | 2.62 | 3.34 | 1 | 1 |
| 10 | 120 | up | 9.2 | 69.35 | 8.27 | -4.14 | 8.7 | 2.2 | 2.35 | 1 | 1 |
| 10 | 130 | up | 7.81 | 79.78 | 7.86 | -5.05 | 4.61 | 1.71 | 1.48 | 1 | 1 |
| 10 | 140 | up | 6.49 | 94.29 | 7.23 | -5.54 | 2.61 | 1.22 | 0.79 | 1 | 1 |
| 10 | 150 | up | 5.58 | 115.43 | 6.33 | -5.48 | 1.42 | 0.88 | 0.38 | 1 | 1 |
| 10 | 165 | up | 4.87 | 147.61 | 5.62 | -5.43 | 0.62 | 0.66 | 0.15 | 1 | 1 |
| 10 | 175 | up | 4.62 | 169.04 | 5.5 | -5.48 | 0.26 | 0.63 | 0.06 | 1 | 1 |
| 10 | 180 | up | 4.54 | 180 | 5.54 | -5.54 | -0.1 | 0.64 | -0.02 | 1 | 1 |
| 12 | 35 | down | 16.89 | 21.5 | 6.08 | 4.98 | 23.44 | 1.01 | 5.51 | 1 | 0.64 |
| 12 | 39 | down | 17.19 | 22.85 | 6.71 | 5.22 | 25.42 | 1.19 | 5.75 | 1 | 0.64 |
| 12 | 42 | down | 17.3 | 23.95 | 7.09 | 5.27 | 26.51 | 1.33 | 5.87 | 1 | 0.65 |
| 12 | 45 | down | 17.3 | 25.16 | 7.38 | 5.22 | 27.37 | 1.48 | 5.95 | 1 | 0.66 |
| 12 | 50 | down | 17.16 | 27.31 | 7.73 | 4.97 | 28.53 | 1.74 | 6.06 | 1 | 0.68 |
| 12 | 60 | down | 16.54 | 31.92 | 8.21 | 4.1 | 30.07 | 2.24 | 6.2 | 1 | 0.76 |
| 12 | 75 | down | 15.23 | 39.51 | 8.73 | 2.26 | 30.68 | 2.97 | 6.23 | 1 | 0.95 |
| 12 | 90 | down | 14.2 | 50.63 | 9.01 | 0 | 21.37 | 3.35 | 5 | 1 | 1 |
| 12 | 100 | down | 13.23 | 59.12 | 8.85 | -1.54 | 13.68 | 3.06 | 3.66 | 1 | 1 |
| 12 | 110 | down | 11.92 | 68.37 | 8.47 | -2.9 | 7.57 | 2.46 | 2.41 | 1 | 1 |
| 12 | 80 | up | 14.65 | 43.13 | 8.64 | 1.5 | 30.79 | 2.8 | 5.58 | 1 | 0.79 |
| 12 | 90 | up | 13.53 | 48.74 | 8.92 | 0 | 30.79 | 3.23 | 5.54 | 1 | 0.91 |
| 12 | 100 | up | 12.62 | 55.93 | 9.14 | -1.59 | 26.82 | 3.55 | 5.09 | 1 | 1 |
| 12 | 110 | up | 11.78 | 64.89 | 9.1 | -3.11 | 18.82 | 3.47 | 4.05 | 1 | 1 |
| 12 | 120 | up | 10.59 | 74.55 | 8.85 | -4.42 | 11.98 | 3.04 | 2.93 | 1 | 1 |
| 12 | 130 | up | 9.23 | 85.72 | 8.45 | -5.43 | 6.24 | 2.44 | 1.87 | 1 | 1 |
| 12 | 140 | up | 7.87 | 99.58 | 7.95 | -6.09 | 3.31 | 1.8 | 1.04 | 1 | 1 |
| 12 | 150 | up | 6.8 | 117.26 | 7.36 | -6.37 | 1.92 | 1.3 | 0.55 | 1 | 1 |
| 12 | 165 | up | 5.92 | 148.11 | 6.65 | -6.42 | 0.88 | 0.98 | 0.22 | 1 | 1 |
| 12 | 175 | up | 5.63 | 169.22 | 6.51 | -6.49 | 0.37 | 0.93 | 0.08 | 1 | 1 |
| 12 | 180 | up | 5.53 | 180 | 6.56 | -6.56 | -0.15 | 0.95 | -0.03 | 1 | 1 |
| 14 | 35 | down | 18.92 | 21.82 | 6.35 | 5.2 | 26.37 | 1.11 | 5.91 | 1 | 0.55 |
| 14 | 39 | down | 19.16 | 23.31 | 6.99 | 5.43 | 28.05 | 1.3 | 6.08 | 1 | 0.55 |
| 14 | 42 | down | 19.2 | 24.57 | 7.33 | 5.45 | 28.96 | 1.46 | 6.16 | 1 | 0.55 |
| 14 | 45 | down | 19.14 | 25.93 | 7.58 | 5.36 | 29.62 | 1.63 | 6.23 | 1 | 0.57 |

| V TW kn | beta TW deg | Spinnaker | V AW kn | beta AW deg | Hull Speed kn | VMG kn | Heel Angle deg | Fwd Force kN | Sideforce kN | Reef | Flat |
|---------|-------------|-----------|---------|-------------|---------------|--------|----------------|--------------|--------------|------|------|
| 14 | 50 | down | 18.9 | 28.34 | 7.91 | 5.08 | 30.38 | 1.92 | 6.34 | 0.98 | 0.61 |
| 14 | 60 | down | 18.13 | 33.7 | 8.38 | 4.19 | 30 | 2.49 | 6.76 | 0.88 | 0.88 |
| 14 | 75 | down | 16.68 | 41.72 | 8.96 | 2.32 | 31.6 | 3.33 | 6.58 | 0.95 | 0.95 |
| 14 | 90 | down | 15.42 | 52.4 | 9.41 | 0 | 26.68 | 4.02 | 5.71 | 1 | 1 |
| 14 | 100 | down | 14.73 | 62.01 | 9.31 | -1.62 | 17.01 | 3.8 | 4.25 | 1 | 1 |
| 14 | 110 | down | 13.5 | 72.12 | 8.89 | -3.04 | 9.67 | 3.1 | 2.83 | 1 | 1 |
| 14 | 80 | up | 16.07 | 45.6 | 8.87 | 1.54 | 31.49 | 3.17 | 5.93 | 0.93 | 0.79 |
| 14 | 90 | up | 14.83 | 51.69 | 9.19 | 0 | 31.59 | 3.67 | 5.92 | 0.93 | 0.95 |
| 14 | 100 | up | 13.49 | 58.24 | 9.49 | -1.65 | 32.27 | 4.15 | 5.63 | 0.99 | 1 |
| 14 | 110 | up | 12.91 | 68.03 | 9.59 | -3.28 | 23.84 | 4.29 | 4.7 | 1 | 1 |
| 14 | 120 | up | 11.94 | 78.41 | 9.41 | -4.71 | 15.69 | 3.96 | 3.53 | 1 | 1 |
| 14 | 130 | up | 10.67 | 90.18 | 9.02 | -5.8 | 8.58 | 3.3 | 2.31 | 1 | 1 |
| 14 | 140 | up | 9.33 | 104.23 | 8.51 | -6.52 | 4.14 | 2.51 | 1.33 | 1 | 1 |
| 14 | 150 | up | 8.2 | 120.78 | 8.02 | -6.94 | 2.49 | 1.87 | 0.75 | 1 | 1 |
| 14 | 165 | up | 7.1 | 149.08 | 7.53 | -7.27 | 1.19 | 1.41 | 0.31 | 1 | 1 |
| 14 | 175 | up | 6.74 | 169.49 | 7.43 | -7.4 | 0.52 | 1.34 | 0.12 | 1 | 1 |
| 14 | 180 | up | 6.64 | 180 | 7.47 | -7.47 | -0.21 | 1.37 | -0.04 | 1 | 1 |
| 16 | 35 | down | 20.79 | 22.25 | 6.5 | 5.33 | 28.08 | 1.17 | 6.24 | 0.98 | 0.5 |
| 16 | 39 | down | 20.98 | 23.97 | 7.14 | 5.55 | 28.98 | 1.38 | 6.41 | 0.95 | 0.53 |
| 16 | 42 | down | 20.96 | 25.39 | 7.47 | 5.55 | 29.55 | 1.57 | 6.53 | 0.94 | 0.56 |
| 16 | 45 | down | 20.86 | 26.86 | 7.72 | 5.46 | 30.07 | 1.76 | 6.63 | 0.92 | 0.59 |
| 16 | 50 | down | 20.57 | 29.47 | 8.04 | 5.17 | 30.64 | 2.08 | 6.75 | 0.91 | 0.64 |
| 16 | 60 | down | 19.75 | 34.95 | 8.54 | 4.27 | 31.37 | 2.72 | 6.9 | 0.89 | 0.76 |
| 16 | 75 | down | 16.96 | 40.35 | 8.98 | 2.32 | 41.78 | 3.58 | 7.3 | 0.99 | 0.93 |
| 16 | 90 | down | 16.36 | 53.56 | 9.71 | 0 | 32.03 | 4.56 | 6.28 | 1 | 1 |
| 16 | 100 | down | 16.1 | 64.22 | 9.73 | -1.69 | 20.67 | 4.54 | 4.83 | 1 | 1 |
| 16 | 110 | down | 15.06 | 74.98 | 9.32 | -3.19 | 12.12 | 3.79 | 3.31 | 1 | 1 |
| 16 | 80 | up | 17.49 | 47.74 | 9.08 | 1.58 | 31.84 | 3.5 | 6.3 | 0.86 | 0.82 |
| 16 | 90 | up | 16.17 | 54.3 | 9.44 | 0 | 31.95 | 4.09 | 6.25 | 0.86 | 0.98 |
| 16 | 100 | up | 14.67 | 61.32 | 9.76 | -1.69 | 33.41 | 4.63 | 5.84 | 0.96 | 0.97 |
| 16 | 110 | up | 13.81 | 70.65 | 9.99 | -3.42 | 28.84 | 5.02 | 5.22 | 1 | 1 |
| 16 | 120 | up | 13.18 | 81.49 | 9.94 | -4.97 | 19.65 | 4.9 | 4.11 | 1 | 1 |
| 16 | 130 | up | 12.1 | 93.49 | 9.6 | -6.17 | 11.28 | 4.26 | 2.79 | 1 | 1 |
| 16 | 140 | up | 10.82 | 107.64 | 9.06 | -6.94 | 5.29 | 3.36 | 1.68 | 1 | 1 |
| 16 | 150 | up | 9.68 | 123.81 | 8.57 | -7.42 | 3.14 | 2.6 | 0.99 | 1 | 1 |
| 16 | 165 | up | 8.51 | 150.65 | 8.15 | -7.88 | 1.55 | 2.03 | 0.42 | 1 | 1 |
| 16 | 175 | up | 8.11 | 170.02 | 8.08 | -8.05 | 0.7 | 1.94 | 0.17 | 1 | 1 |
| 16 | 180 | up | 8.01 | 180 | 8.12 | -8.12 | -0.3 | 1.99 | -0.07 | 1 | 1 |
| 20 | 35 | down | 24.28 | 23.36 | 6.62 | 5.42 | 28.69 | 1.25 | 6.89 | 0.86 | 0.51 |
| 20 | 39 | down | 24.42 | 25.22 | 7.3 | 5.67 | 29.73 | 1.51 | 7.11 | 0.84 | 0.55 |
| 20 | 42 | down | 24.35 | 26.77 | 7.63 | 5.67 | 30.31 | 1.72 | 7.23 | 0.82 | 0.59 |
| 20 | 45 | down | 24.19 | 28.42 | 7.88 | 5.57 | 30.75 | 1.95 | 7.33 | 0.81 | 0.62 |
| 20 | 50 | down | 23.82 | 31.27 | 8.22 | 5.28 | 31.31 | 2.33 | 7.46 | 0.8 | 0.68 |
| 20 | 60 | down | 22.85 | 37.4 | 8.76 | 4.38 | 31.42 | 3.08 | 7.7 | 0.75 | 0.88 |

| V TW kn | beta TW deg | Spinnaker | V AW kn | beta AW deg | Hull Speed kn | VMG kn | Heel Angle deg | Fwd Force kN | Sideforce kN | Reef | Flat |
|------------|-------------------|-----------|------------|-------------------|---------------------|-----------|----------------------|--------------------|-----------------|------|------|
| 20 | 75 | down | 21.04 | 46.91 | 9.49 | 2.46 | 32.51 | 4.23 | 7.49 | 0.79 | 1 |
| 20 | 90 | down | 18.97 | 57.76 | 10.12 | 0 | 33.21 | 5.34 | 6.71 | 0.93 | 1 |
| 20 | 100 | down | 18.31 | 67.54 | 10.38 | -1.8 | 28.22 | 5.83 | 5.78 | 1 | 1 |
| 20 | 110 | down | 17.95 | 79.19 | 10.11 | -3.46 | 17.83 | 5.23 | 4.3 | 1 | 1 |
| 20 | 80 | up | 20.25 | 51.1 | 9.42 | 1.64 | 32.58 | 4.09 | 7.15 | 0.73 | 0.97 |
| 20 | 90 | up | 18.79 | 58.41 | 9.84 | 0 | 33.07 | 4.82 | 6.81 | 0.78 | 1 |
| 20 | 100 | up | 17.23 | 66.59 | 10.2 | -1.77 | 33.63 | 5.49 | 6.34 | 0.86 | 1 |
| 20 | 110 | up | 15.56 | 75.78 | 10.51 | -3.59 | 34.78 | 6.16 | 5.81 | 0.97 | 0.98 |
| 20 | 120 | up | 15.24 | 86.77 | 10.76 | -5.38 | 27.54 | 6.68 | 5.02 | 1 | 1 |
| 20 | 130 | up | 14.8 | 98.63 | 10.64 | -6.84 | 17.43 | 6.37 | 3.76 | 1 | 1 |
| 20 | 140 | up | 13.77 | 112.2 | 10.2 | -7.82 | 9.52 | 5.38 | 2.48 | 1 | 1 |
| 20 | 150 | up | 12.67 | 127.65 | 9.7 | -8.4 | 4.92 | 4.43 | 1.57 | 1 | 1 |
| 20 | 165 | up | 11.44 | 152.91 | 9.27 | -8.96 | 2.39 | 3.69 | 0.7 | 1 | 1 |
| 20 | 175 | up | 11.01 | 170.82 | 9.21 | -9.17 | 1.16 | 3.59 | 0.29 | 1 | 1 |
| 20 | 180 | up | 10.89 | 180 | 9.26 | -9.26 | -0.54 | 3.67 | -0.12 | 1 | 1 |

Performance Keel



| V TW kn | beta TW deg | Spinnaker | V AW kn | beta AW deg | Hull Speed kn | VMG kn | Heel Angle deg | Fwd Force kN | Sideforce kN | Reef | Flat |
|---------|-------------|-----------|---------|-------------|---------------|--------|----------------|--------------|--------------|------|------|
| 6 | 35 | down | 9.5 | 20.88 | 4 | 3.28 | 7.16 | 0.4 | 2.57 | 1 | 0.95 |
| 6 | 39 | down | 9.9 | 21.94 | 4.56 | 3.54 | 8.85 | 0.51 | 2.98 | 1 | 1 |
| 6 | 42 | down | 10.13 | 22.79 | 4.92 | 3.66 | 9.52 | 0.58 | 3.13 | 1 | 1 |
| 6 | 45 | down | 10.3 | 23.68 | 5.23 | 3.7 | 10.05 | 0.65 | 3.25 | 1 | 1 |
| 6 | 50 | down | 10.5 | 25.21 | 5.68 | 3.65 | 10.64 | 0.77 | 3.37 | 1 | 1 |
| 6 | 60 | down | 10.63 | 28.36 | 6.38 | 3.19 | 11 | 0.97 | 3.43 | 1 | 1 |
| 6 | 75 | down | 10.22 | 33.64 | 6.97 | 1.8 | 9.65 | 1.16 | 3.1 | 1 | 1 |
| 6 | 90 | down | 9.16 | 40.2 | 7 | 0 | 6.61 | 1.15 | 2.38 | 1 | 1 |
| 6 | 100 | down | 8.16 | 45.79 | 6.72 | -1.17 | 4.54 | 1.03 | 1.77 | 1 | 1 |
| 6 | 110 | down | 6.91 | 54.03 | 6.09 | -2.08 | 2.95 | 0.82 | 1.11 | 1 | 1 |
| 6 | 80 | up | 9.68 | 37.33 | 6.65 | 1.15 | 8.9 | 1.03 | 2.64 | 1 | 1 |
| 6 | 90 | up | 9.21 | 40.31 | 7.02 | 0 | 9.25 | 1.17 | 2.69 | 1 | 1 |
| 6 | 100 | up | 8.43 | 44.29 | 7.08 | -1.23 | 7.93 | 1.19 | 2.4 | 1 | 1 |
| 6 | 110 | up | 7.41 | 49.73 | 6.86 | -2.34 | 5.42 | 1.08 | 1.84 | 1 | 1 |
| 6 | 120 | up | 6.14 | 58.39 | 6.24 | -3.12 | 3.44 | 0.87 | 1.17 | 1 | 1 |
| 6 | 130 | up | 4.89 | 71.15 | 5.47 | -3.51 | 2.09 | 0.63 | 0.65 | 1 | 1 |
| 6 | 140 | up | 3.89 | 89.41 | 4.67 | -3.58 | 1.12 | 0.44 | 0.31 | 1 | 1 |
| 6 | 150 | up | 3.28 | 112.93 | 3.96 | -3.43 | 0.54 | 0.31 | 0.14 | 1 | 1 |
| 6 | 165 | up | 2.86 | 146.84 | 3.44 | -3.33 | 0.21 | 0.23 | 0.05 | 1 | 1 |
| 6 | 175 | up | 2.71 | 168.8 | 3.36 | -3.35 | 0.08 | 0.22 | 0.02 | 1 | 1 |
| 6 | 180 | up | 2.66 | 180 | 3.38 | -3.38 | -0.03 | 0.22 | -0.01 | 1 | 1 |
| 8 | 35 | down | 12.33 | 20.99 | 5.03 | 4.12 | 13.37 | 0.66 | 4.03 | 1 | 0.88 |
| 8 | 39 | down | 12.69 | 22.16 | 5.61 | 4.36 | 15.67 | 0.82 | 4.51 | 1 | 0.92 |
| 8 | 42 | down | 12.89 | 23.04 | 6 | 4.46 | 17.15 | 0.93 | 4.8 | 1 | 0.95 |
| 8 | 45 | down | 13.06 | 23.88 | 6.36 | 4.5 | 18.47 | 1.04 | 5.04 | 1 | 0.97 |
| 8 | 50 | down | 13.24 | 25.29 | 6.91 | 4.44 | 20.27 | 1.23 | 5.36 | 1 | 1 |
| 8 | 60 | down | 13.15 | 29.18 | 7.55 | 3.77 | 19.86 | 1.56 | 5.24 | 1 | 1 |
| 8 | 75 | down | 12.38 | 36.31 | 7.93 | 2.05 | 16.03 | 1.87 | 4.47 | 1 | 1 |
| 8 | 90 | down | 11.13 | 44.36 | 7.96 | 0 | 10.85 | 1.86 | 3.36 | 1 | 1 |
| 8 | 100 | down | 10.06 | 50.4 | 7.79 | -1.35 | 7.24 | 1.67 | 2.52 | 1 | 1 |
| 8 | 110 | down | 8.79 | 57.82 | 7.4 | -2.53 | 4.28 | 1.35 | 1.66 | 1 | 1 |
| 8 | 80 | up | 11.92 | 39.06 | 7.86 | 1.37 | 17.71 | 1.79 | 4.32 | 1 | 1 |
| 8 | 90 | up | 11.12 | 43.53 | 8.06 | 0 | 16.97 | 2.01 | 4.16 | 1 | 1 |
| 8 | 100 | up | 10.19 | 49 | 8.08 | -1.4 | 13.45 | 2.01 | 3.49 | 1 | 1 |
| 8 | 110 | up | 9.08 | 55.25 | 7.93 | -2.71 | 9.26 | 1.82 | 2.65 | 1 | 1 |
| 8 | 120 | up | 7.8 | 62.88 | 7.59 | -3.79 | 5.38 | 1.49 | 1.81 | 1 | 1 |
| 8 | 130 | up | 6.41 | 74.05 | 6.94 | -4.46 | 3.23 | 1.11 | 1.08 | 1 | 1 |
| 8 | 140 | up | 5.18 | 92.24 | 5.97 | -4.57 | 1.75 | 0.78 | 0.52 | 1 | 1 |
| 8 | 150 | up | 4.42 | 114.16 | 5.17 | -4.48 | 0.9 | 0.55 | 0.25 | 1 | 1 |
| 8 | 165 | up | 3.85 | 147.15 | 4.56 | -4.4 | 0.38 | 0.41 | 0.09 | 1 | 1 |
| 8 | 175 | up | 3.65 | 168.9 | 4.45 | -4.43 | 0.15 | 0.39 | 0.04 | 1 | 1 |
| 8 | 180 | up | 3.58 | 180 | 4.48 | -4.48 | -0.06 | 0.4 | -0.01 | 1 | 1 |
| 10 | 35 | down | 14.81 | 21.15 | 5.74 | 4.71 | 18.91 | 0.89 | 5.17 | 1 | 0.78 |
| 10 | 39 | down | 15.14 | 22.39 | 6.36 | 4.94 | 21.18 | 1.08 | 5.56 | 1 | 0.8 |

| V TW kn | beta TW deg | Spinnaker | V AW kn | beta AW deg | Hull Speed kn | VMG kn | Heel Angle deg | Fwd Force kN | Sideforce kN | Reef | Flat |
|------------|-------------------|-----------|------------|-------------------|---------------------|-----------|----------------------|--------------------|-----------------|------|------|
| 10 | 42 | down | 15.33 | 23.31 | 6.79 | 5.04 | 22.55 | 1.21 | 5.78 | 1 | 0.81 |
| 10 | 45 | down | 15.42 | 24.31 | 7.12 | 5.04 | 23.64 | 1.34 | 5.94 | 1 | 0.82 |
| 10 | 50 | down | 15.39 | 26.19 | 7.52 | 4.83 | 25.02 | 1.58 | 6.13 | 1 | 0.85 |
| 10 | 60 | down | 14.95 | 30.32 | 8.02 | 4.01 | 26.83 | 2.05 | 6.37 | 1 | 0.95 |
| 10 | 75 | down | 14.06 | 38.49 | 8.47 | 2.19 | 22.62 | 2.58 | 5.68 | 1 | 1 |
| 10 | 90 | down | 12.81 | 48.19 | 8.54 | 0 | 14.9 | 2.64 | 4.23 | 1 | 1 |
| 10 | 100 | down | 11.68 | 55.39 | 8.36 | -1.45 | 9.74 | 2.35 | 3.09 | 1 | 1 |
| 10 | 110 | down | 10.36 | 63.63 | 8 | -2.73 | 5.34 | 1.88 | 2.03 | 1 | 1 |
| 10 | 80 | up | 13.35 | 40.63 | 8.41 | 1.46 | 27.07 | 2.5 | 5.71 | 1 | 1 |
| 10 | 90 | up | 12.51 | 46.38 | 8.63 | 0 | 24.36 | 2.81 | 5.3 | 1 | 1 |
| 10 | 100 | up | 11.63 | 53.24 | 8.7 | -1.51 | 18.81 | 2.88 | 4.43 | 1 | 1 |
| 10 | 110 | up | 10.53 | 60.86 | 8.56 | -2.93 | 12.93 | 2.64 | 3.37 | 1 | 1 |
| 10 | 120 | up | 9.22 | 69.47 | 8.26 | -4.13 | 7.92 | 2.21 | 2.36 | 1 | 1 |
| 10 | 130 | up | 7.81 | 79.92 | 7.84 | -5.04 | 4.34 | 1.71 | 1.48 | 1 | 1 |
| 10 | 140 | up | 6.49 | 94.53 | 7.2 | -5.52 | 2.47 | 1.23 | 0.79 | 1 | 1 |
| 10 | 150 | up | 5.59 | 115.68 | 6.3 | -5.46 | 1.34 | 0.88 | 0.38 | 1 | 1 |
| 10 | 165 | up | 4.88 | 147.72 | 5.6 | -5.41 | 0.58 | 0.67 | 0.15 | 1 | 1 |
| 10 | 175 | up | 4.63 | 169.08 | 5.49 | -5.47 | 0.24 | 0.63 | 0.06 | 1 | 1 |
| 10 | 180 | up | 4.55 | 180 | 5.52 | -5.52 | -0.09 | 0.64 | -0.02 | 1 | 1 |
| 12 | 35 | down | 17.05 | 21.35 | 6.24 | 5.11 | 23.15 | 1.07 | 5.92 | 1 | 0.68 |
| 12 | 39 | down | 17.35 | 22.68 | 6.88 | 5.35 | 25.13 | 1.27 | 6.2 | 1 | 0.68 |
| 12 | 42 | down | 17.44 | 23.82 | 7.24 | 5.38 | 26.21 | 1.42 | 6.34 | 1 | 0.69 |
| 12 | 45 | down | 17.43 | 25.04 | 7.5 | 5.31 | 27.09 | 1.58 | 6.45 | 1 | 0.7 |
| 12 | 50 | down | 17.27 | 27.21 | 7.84 | 5.04 | 28.26 | 1.86 | 6.59 | 1 | 0.73 |
| 12 | 60 | down | 16.53 | 31.52 | 8.29 | 4.14 | 30.69 | 2.4 | 7.08 | 0.96 | 0.93 |
| 12 | 75 | down | 15.37 | 39.51 | 8.84 | 2.29 | 29.86 | 3.18 | 6.73 | 1 | 1 |
| 12 | 90 | down | 14.35 | 50.97 | 9.04 | 0 | 19.32 | 3.43 | 5.07 | 1 | 1 |
| 12 | 100 | down | 13.28 | 59.29 | 8.84 | -1.54 | 12.4 | 3.09 | 3.67 | 1 | 1 |
| 12 | 110 | down | 11.94 | 68.49 | 8.45 | -2.89 | 6.88 | 2.47 | 2.4 | 1 | 1 |
| 12 | 80 | up | 14.74 | 42.9 | 8.74 | 1.52 | 30.61 | 3 | 6.11 | 1 | 0.85 |
| 12 | 90 | up | 13.61 | 48.45 | 9.03 | 0 | 30.62 | 3.45 | 6.07 | 1 | 0.97 |
| 12 | 100 | up | 12.85 | 56.29 | 9.21 | -1.6 | 24.46 | 3.7 | 5.26 | 1 | 1 |
| 12 | 110 | up | 11.89 | 65.07 | 9.12 | -3.12 | 17.15 | 3.54 | 4.11 | 1 | 1 |
| 12 | 120 | up | 10.63 | 74.66 | 8.84 | -4.42 | 10.91 | 3.07 | 2.95 | 1 | 1 |
| 12 | 130 | up | 9.23 | 85.84 | 8.44 | -5.42 | 5.7 | 2.45 | 1.87 | 1 | 1 |
| 12 | 140 | up | 7.87 | 99.72 | 7.93 | -6.08 | 3.14 | 1.8 | 1.04 | 1 | 1 |
| 12 | 150 | up | 6.81 | 117.42 | 7.34 | -6.35 | 1.82 | 1.3 | 0.55 | 1 | 1 |
| 12 | 165 | up | 5.94 | 148.22 | 6.63 | -6.4 | 0.83 | 0.99 | 0.22 | 1 | 1 |
| 12 | 175 | up | 5.65 | 169.26 | 6.49 | -6.47 | 0.35 | 0.94 | 0.08 | 1 | 1 |
| 12 | 180 | up | 5.55 | 180 | 6.54 | -6.54 | -0.14 | 0.96 | -0.03 | 1 | 1 |
| 14 | 35 | down | 19.12 | 21.6 | 6.57 | 5.38 | 26.25 | 1.19 | 6.4 | 1 | 0.58 |
| 14 | 39 | down | 19.34 | 23.13 | 7.17 | 5.57 | 27.9 | 1.4 | 6.6 | 1 | 0.58 |
| 14 | 42 | down | 19.35 | 24.42 | 7.48 | 5.56 | 28.77 | 1.58 | 6.7 | 1 | 0.59 |
| 14 | 45 | down | 19.27 | 25.77 | 7.72 | 5.46 | 29.59 | 1.77 | 6.79 | 1 | 0.6 |

| V TW kn | beta TW deg | Spinnaker | V AW kn | beta AW deg | Hull Speed kn | VMG kn | Heel Angle deg | Fwd Force kN | Sideforce kN | Reef | Flat |
|---------|-------------|-----------|---------|-------------|---------------|--------|----------------|--------------|--------------|------|------|
| 14 | 50 | down | 19.03 | 28.15 | 8.03 | 5.16 | 30.55 | 2.08 | 6.89 | 1 | 0.63 |
| 14 | 60 | down | 18.2 | 33.31 | 8.49 | 4.25 | 30.83 | 2.69 | 7.37 | 0.91 | 0.9 |
| 14 | 75 | down | 16.8 | 41.39 | 9.09 | 2.35 | 32.03 | 3.59 | 7.03 | 0.99 | 0.91 |
| 14 | 90 | down | 15.7 | 52.87 | 9.48 | 0 | 24.13 | 4.18 | 5.87 | 1 | 1 |
| 14 | 100 | down | 14.83 | 62.22 | 9.32 | -1.62 | 15.43 | 3.86 | 4.29 | 1 | 1 |
| 14 | 110 | down | 13.53 | 72.24 | 8.87 | -3.03 | 8.79 | 3.12 | 2.84 | 1 | 1 |
| 14 | 80 | up | 16.16 | 45.22 | 9 | 1.56 | 32.17 | 3.41 | 6.31 | 0.99 | 0.74 |
| 14 | 90 | up | 14.87 | 51.16 | 9.33 | 0 | 32.27 | 3.95 | 6.45 | 0.95 | 0.96 |
| 14 | 100 | up | 13.81 | 58.51 | 9.62 | -1.67 | 30.1 | 4.42 | 5.94 | 1 | 1 |
| 14 | 110 | up | 13.11 | 68.21 | 9.64 | -3.3 | 21.81 | 4.43 | 4.84 | 1 | 1 |
| 14 | 120 | up | 12.02 | 78.5 | 9.42 | -4.71 | 14.3 | 4.02 | 3.58 | 1 | 1 |
| 14 | 130 | up | 10.69 | 90.29 | 9 | -5.79 | 7.81 | 3.31 | 2.31 | 1 | 1 |
| 14 | 140 | up | 9.33 | 104.34 | 8.49 | -6.5 | 3.92 | 2.52 | 1.33 | 1 | 1 |
| 14 | 150 | up | 8.21 | 120.88 | 8 | -6.93 | 2.36 | 1.88 | 0.75 | 1 | 1 |
| 14 | 165 | up | 7.12 | 149.15 | 7.51 | -7.26 | 1.11 | 1.42 | 0.31 | 1 | 1 |
| 14 | 175 | up | 6.76 | 169.52 | 7.41 | -7.38 | 0.48 | 1.35 | 0.12 | 1 | 1 |
| 14 | 180 | up | 6.66 | 180 | 7.45 | -7.45 | -0.19 | 1.37 | -0.05 | 1 | 1 |
| 16 | 35 | down | 21.05 | 21.92 | 6.75 | 5.53 | 28.54 | 1.26 | 6.73 | 1 | 0.5 |
| 16 | 39 | down | 21.18 | 23.67 | 7.32 | 5.69 | 29.59 | 1.5 | 6.93 | 0.98 | 0.53 |
| 16 | 42 | down | 21.13 | 25.11 | 7.62 | 5.66 | 30.1 | 1.7 | 7.05 | 0.97 | 0.56 |
| 16 | 45 | down | 21.01 | 26.63 | 7.85 | 5.55 | 30.5 | 1.91 | 7.14 | 0.95 | 0.59 |
| 16 | 50 | down | 20.73 | 29.08 | 8.16 | 5.25 | 31.9 | 2.24 | 7.12 | 0.99 | 0.57 |
| 16 | 60 | down | 19.85 | 34.98 | 8.65 | 4.32 | 30.4 | 2.93 | 7.7 | 0.84 | 0.92 |
| 16 | 75 | down | 17.93 | 42.36 | 9.28 | 2.4 | 35.26 | 3.96 | 7.72 | 0.94 | 0.98 |
| 16 | 90 | down | 16.8 | 54.17 | 9.84 | 0 | 29.05 | 4.83 | 6.55 | 1 | 1 |
| 16 | 100 | down | 16.29 | 64.46 | 9.76 | -1.69 | 18.76 | 4.64 | 4.91 | 1 | 1 |
| 16 | 110 | down | 15.12 | 75.11 | 9.3 | -3.18 | 11.02 | 3.82 | 3.32 | 1 | 1 |
| 16 | 80 | up | 17.58 | 47.35 | 9.21 | 1.6 | 32.32 | 3.78 | 6.8 | 0.9 | 0.82 |
| 16 | 90 | up | 16.21 | 53.77 | 9.58 | 0 | 32.67 | 4.4 | 6.77 | 0.9 | 0.97 |
| 16 | 100 | up | 14.77 | 60.89 | 9.91 | -1.72 | 33.33 | 4.99 | 6.36 | 0.98 | 1 |
| 16 | 110 | up | 14.13 | 70.8 | 10.07 | -3.45 | 26.53 | 5.26 | 5.46 | 1 | 1 |
| 16 | 120 | up | 13.33 | 81.54 | 9.96 | -4.98 | 17.96 | 5.01 | 4.2 | 1 | 1 |
| 16 | 130 | up | 12.15 | 93.56 | 9.58 | -6.16 | 10.27 | 4.29 | 2.81 | 1 | 1 |
| 16 | 140 | up | 10.83 | 107.75 | 9.04 | -6.93 | 4.94 | 3.37 | 1.68 | 1 | 1 |
| 16 | 150 | up | 9.7 | 123.89 | 8.55 | -7.41 | 2.99 | 2.6 | 0.99 | 1 | 1 |
| 16 | 165 | up | 8.52 | 150.7 | 8.14 | -7.86 | 1.46 | 2.04 | 0.42 | 1 | 1 |
| 16 | 175 | up | 8.12 | 170.04 | 8.06 | -8.03 | 0.66 | 1.95 | 0.17 | 1 | 1 |
| 16 | 180 | up | 8.02 | 180 | 8.1 | -8.1 | -0.28 | 1.99 | -0.07 | 1 | 1 |
| 20 | 35 | down | 24.56 | 22.98 | 6.9 | 5.65 | 29.36 | 1.36 | 7.45 | 0.89 | 0.51 |
| 20 | 39 | down | 24.63 | 24.93 | 7.49 | 5.82 | 30.25 | 1.65 | 7.67 | 0.86 | 0.55 |
| 20 | 42 | down | 24.53 | 26.53 | 7.79 | 5.79 | 30.74 | 1.89 | 7.8 | 0.85 | 0.58 |
| 20 | 45 | down | 24.36 | 28.18 | 8.03 | 5.68 | 31.19 | 2.13 | 7.9 | 0.84 | 0.62 |
| 20 | 50 | down | 23.97 | 31.01 | 8.36 | 5.37 | 31.76 | 2.54 | 8.05 | 0.83 | 0.68 |
| 20 | 60 | down | 22.98 | 37.15 | 8.9 | 4.45 | 31.66 | 3.35 | 8.36 | 0.77 | 0.9 |

| V TW kn | beta TW deg | Spinnaker | V AW kn | beta AW deg | Hull Speed kn | VMG kn | Heel Angle deg | Fwd Force kN | Sideforce kN | Reef | Flat |
|------------|-------------------|-----------|------------|-------------------|---------------------|-----------|----------------------|--------------------|-----------------|------|------|
| 20 | 75 | down | 21.14 | 46.49 | 9.65 | 2.5 | 33.01 | 4.58 | 8.12 | 0.82 | 1 |
| 20 | 90 | down | 19.03 | 57.28 | 10.29 | 0 | 33.74 | 5.78 | 7.29 | 0.96 | 1 |
| 20 | 100 | down | 18.73 | 67.84 | 10.46 | -1.82 | 25.76 | 6.09 | 6.01 | 1 | 1 |
| 20 | 110 | down | 18.12 | 79.29 | 10.12 | -3.46 | 16.25 | 5.32 | 4.37 | 1 | 1 |
| 20 | 80 | up | 20.38 | 50.74 | 9.58 | 1.66 | 33.05 | 4.42 | 7.53 | 0.78 | 0.87 |
| 20 | 90 | up | 18.79 | 58.2 | 9.9 | 0 | 35.09 | 5.01 | 6.64 | 0.97 | 0.65 |
| 20 | 100 | up | 16.17 | 64.7 | 10.28 | -1.79 | 40.09 | 5.96 | 6.95 | 0.98 | 0.94 |
| 20 | 110 | up | 15.63 | 75.3 | 10.67 | -3.65 | 34.87 | 6.65 | 6.32 | 1 | 1 |
| 20 | 120 | up | 15.57 | 86.65 | 10.84 | -5.42 | 25.38 | 6.97 | 5.25 | 1 | 1 |
| 20 | 130 | up | 14.93 | 98.59 | 10.65 | -6.85 | 15.92 | 6.48 | 3.83 | 1 | 1 |
| 20 | 140 | up | 13.81 | 112.26 | 10.18 | -7.8 | 8.67 | 5.42 | 2.49 | 1 | 1 |
| 20 | 150 | up | 12.69 | 127.74 | 9.67 | -8.38 | 4.63 | 4.44 | 1.58 | 1 | 1 |
| 20 | 165 | up | 11.46 | 152.96 | 9.25 | -8.94 | 2.27 | 3.71 | 0.7 | 1 | 1 |
| 20 | 175 | up | 11.03 | 170.84 | 9.19 | -9.15 | 1.09 | 3.6 | 0.29 | 1 | 1 |
| 20 | 180 | up | 10.91 | 180 | 9.24 | -9.24 | -0.5 | 3.69 | -0.12 | 1 | 1 |