



AQUATORIA
YACHTING

BAVARIA 40S
Instruction



Precautions and recommendations

1

Do not leave the marina in strong winds above 27 knots!

2

Do not use engine speed above 2500 turns.

3

It is allowed to use the engine speed above 2500 turns only for maneuvering.

4

During anchoring do not give up the anchor chain completely. Keep some anchor chain for future use. The length of the given chain must be equal to 4 depths.

5

Watch on the water during parking reverse to avoid winding of the mooring lines on the propeller!

6

Also during reverse parking beware of hidden hazards that may damage the rudder.

7

Removing the anchor go ahead at a low speed 0.3 kn in the line of the chain. This will unload anchor winch and the anchor winch fuse will not be broken out.

.

.

8

If the anchor caught the ground, don't pull it up, otherwise the chain may be broken and the anchor will stay on the ground.

9

To lift the hooked anchor up you need to loose some more chain, after that turn the yacht at another angle and try to pull up the anchor once again.

10

When starting the engine at idle, increase its speed to 3500 turns for a couple of seconds and check if the water is coming of the exhaust pipe.

11

Don't anchor in the wrong place. When sleeping at anchor, check the weather forecast. Make sure that your bay is safe.

12

It's better to give the way to all vessels for you can be out of sight of another boat . Avoid collisions !

13

When anchoring, make sure that your chain does not cross another one.

Important

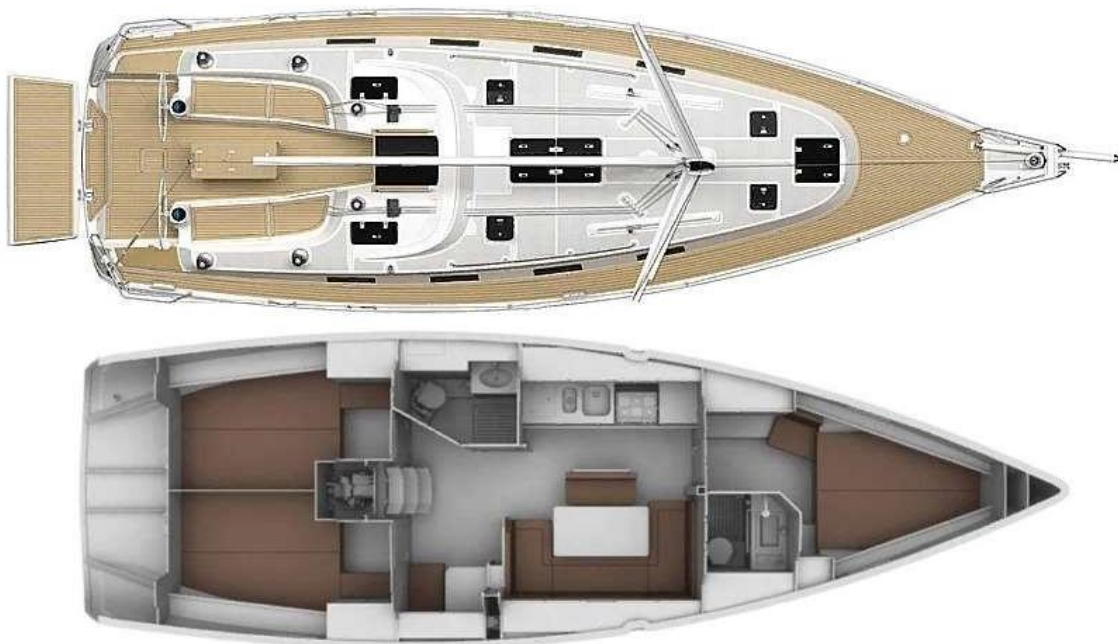


Life raft

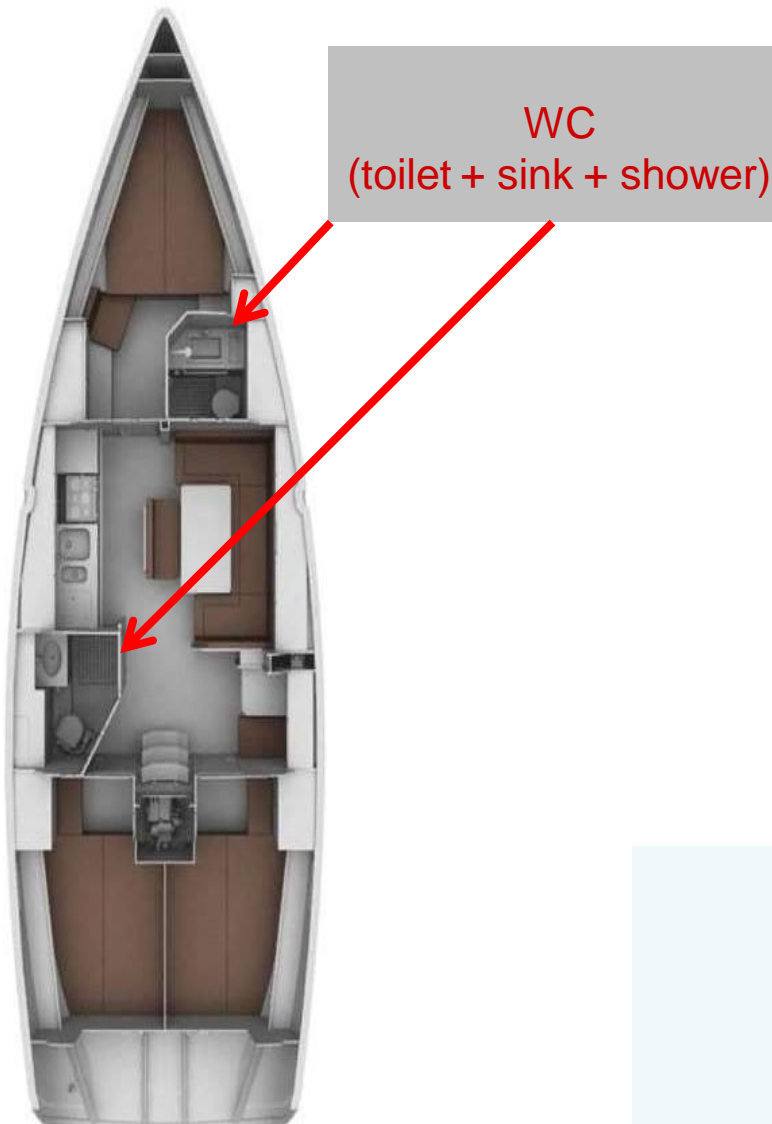
As soon as you are on board, check the availability of all fire extinguishers and life jackets and remember their layout. Instruct the crew and show all fire extinguishers and life jackets locations.

In case of emergency this information may save your life.

Well, it's the first time you are onboard **Bavaria 40S**.
seven unforgettable days and nights (may be more) are ahead.
Yacht is your home now, and it means that you should learn its
either technical or household features to avoid unpleasant
situations and breakdowns.



WC



First you should pay attention to the toilet. Those who have no prior sailing experience may face some difficulties with bathroom and in particular toilet bowl .





1. There is a special pump and switch by the side of the toilet bowl. Put it into left position and pump overboard water.

2. Then put it into right position and pump all contents into a special tank.

3. After that return the pump handle in a low position and lock it.



Don't forget to pump a lot of water !

It is forbidden to throw toilet paper and hygienic kit into the toilet bowl to prevent pipe clogging. Otherwise it will be necessary to disassemble the entire construction .



If you don't pump the water , the smells will soon make themselves felt. If you pump more or do not delete it , the content will be spilled during the roll.

Otherwise if there is a strong roll (according to the rule of communicating vessels) overboard water may come in.



Shower is the tap with hose and you can take it out. There is a cold and hot water.

Drain hole

Triangle on the floor is the drain hole. After a shower the water remains in the room. To drain the water you need to turn on the pump. Shower flush button is next to the sink. Press it , if the shower drain does not work , lift the grate and make sure there is no dirt.



Shower flush button

If the hose does not come out don't pull it!

May be it is caught by something inside. To release the hose , open the box under the sink and correct it.



Water tank switching crane



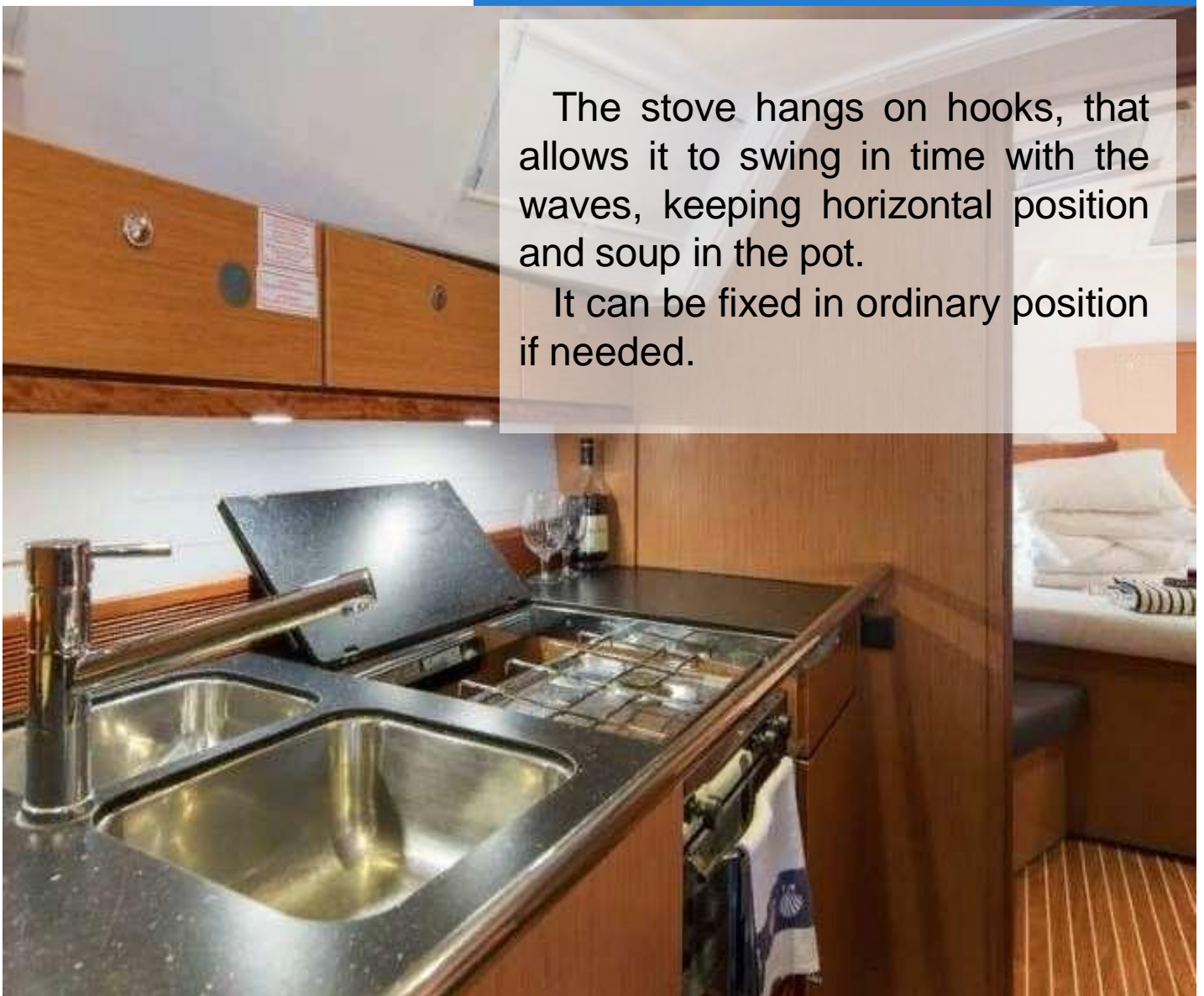
Galley and dining area are the most spacious space of a lower deck. There's enough place for three hostesses during of cooking and whole crew can sit for dinner easily.

The galley is equipped with everything you need for housekeeping.

- *Standard two-hob gas stove with oven*

The stove hangs on hooks, that allows it to swing in time with the waves, keeping horizontal position and soup in the pot.

It can be fixed in ordinary position if needed.



• Washer



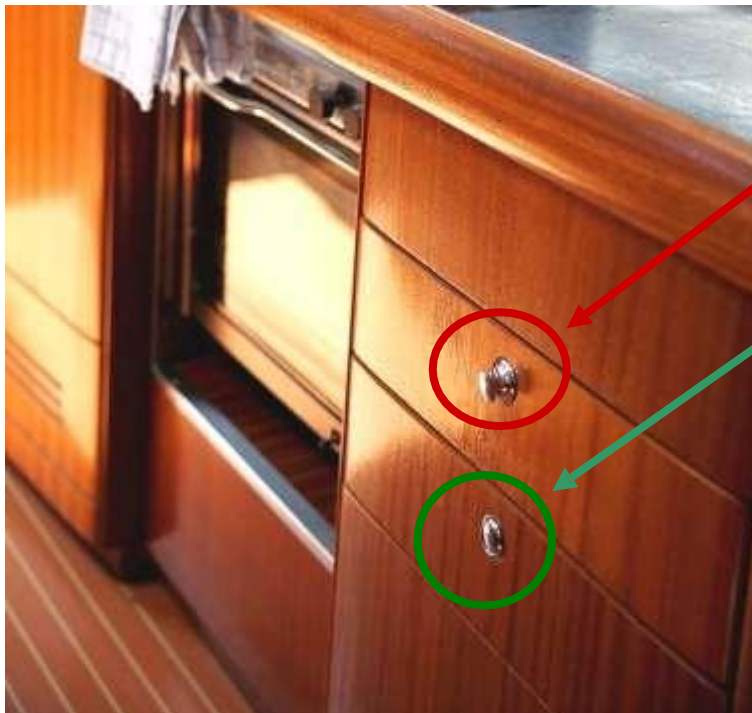
There are two built-in washers. Just like stove, they can be closed with pieces of table top. The tap is standard. To prevent pipe clogging do not flush waste (e.g. coffee grounds)

When the yacht goes under sails all things must be fixed.

Put the food, dishes, cutlery into the boxes. Each box has a locking handle-button.



Press the handle to close the box. Now it is locked and the handle does not sticking out, because it is important during the swell any outstanding object may injure you.



Opened handle-button

Closed handle-button



• Fridge

The size of the fridge is the same as the ordinary one, though it looks completely different. The door is fixed by the spring in open position. Bend the spring to close the fridge.



Gas tap



Gas bottle

NAVIGATOR'S CONSOLE



Navigation control console



Webasto



Inverter
12x220volt
(no more 500 V)

*The batteries on the yacht are designed for 1 day of battery life, to charge the battery You need to connect to the shore power supply or start the engine for 1-2 hours.

Batteries

Boiler and water tank



Cabins



Starboard aft cabin



Forward cabin



Port aft cabin



Fuel tank



Empty box



Boiler



Gas tap (port side) ,
galley.



Fuel emergency tap

Gas bottle



Bilge pump



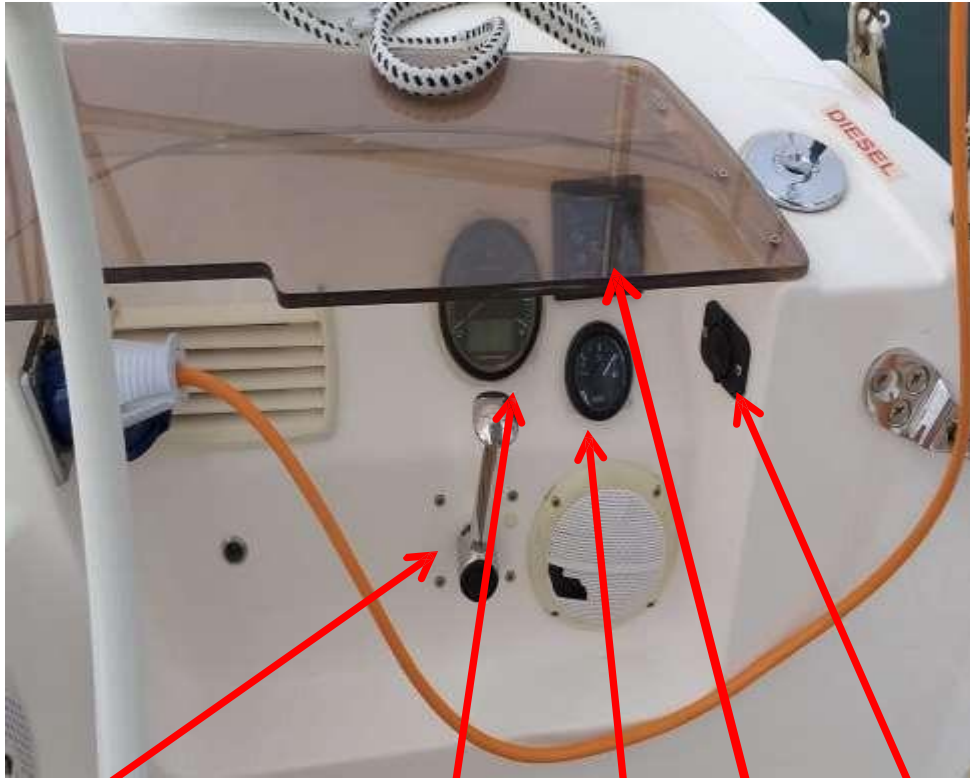
Stern shower. Cold/hot water

Shower, gas door, hand pump



We recommend to shut off the gas tap for a safe night.

Engine management



Gas handle
for engine
management

12V car socket

Engine
control
unit
start/stop

Tachometer

Fuel level
indicator



To check the engine and exhaust system on idle move the gas handle in neutral position (midway). Then press button 1 and start to turn up the engine. Thus you can check the engine operation without propeller rotation.

Gas handle

A rather tricky mechanism.

To go ahead, smoothly move gas handle towards the bow of the yacht (towards the bow).

To go back, smoothly move gas handle back (towards the stern) . All movements should be smooth.

**Watch the engine speed!
Do not go above 2.5 mark!**

To fold up the propeller during sailing, move gas handle into REVERSE position (backward) when power is off. The propeller will fold up.

Don't forget to move gas handle into neutral position before starting the engine.



The chain is tied!

Don't give up the anchor chain completely. Keep some chain for future use.

Anchor winch remote control - forward cabin



- 1) Anchor
- 2) Anchor chain – 50m
- 3) Anchor winch

Anchor winch fuse





The yacht is equipped with multifunctional B&G devices that can be combined. They show:

- 1) Wind direction and speed
- 2) Depth
- 3) Speed
- 4) Autopilot

There are also 2 compasses mounted on two helm stanchions.



Dip stick
(a probe for
checking engine oil
level)

**Don't forget to check oil
level before sailing!**

Engine coolant
**Don't forget to check
coolant level before
sailing!**



Engine alternator belt
**Don't forget to check its condition
before sailing!**

Swimming platform



When you leave the boat and there is no one on it, close the board! Otherwise in the case of unfavorable wind it may smash hinge side against pier. Protect yourself from this.

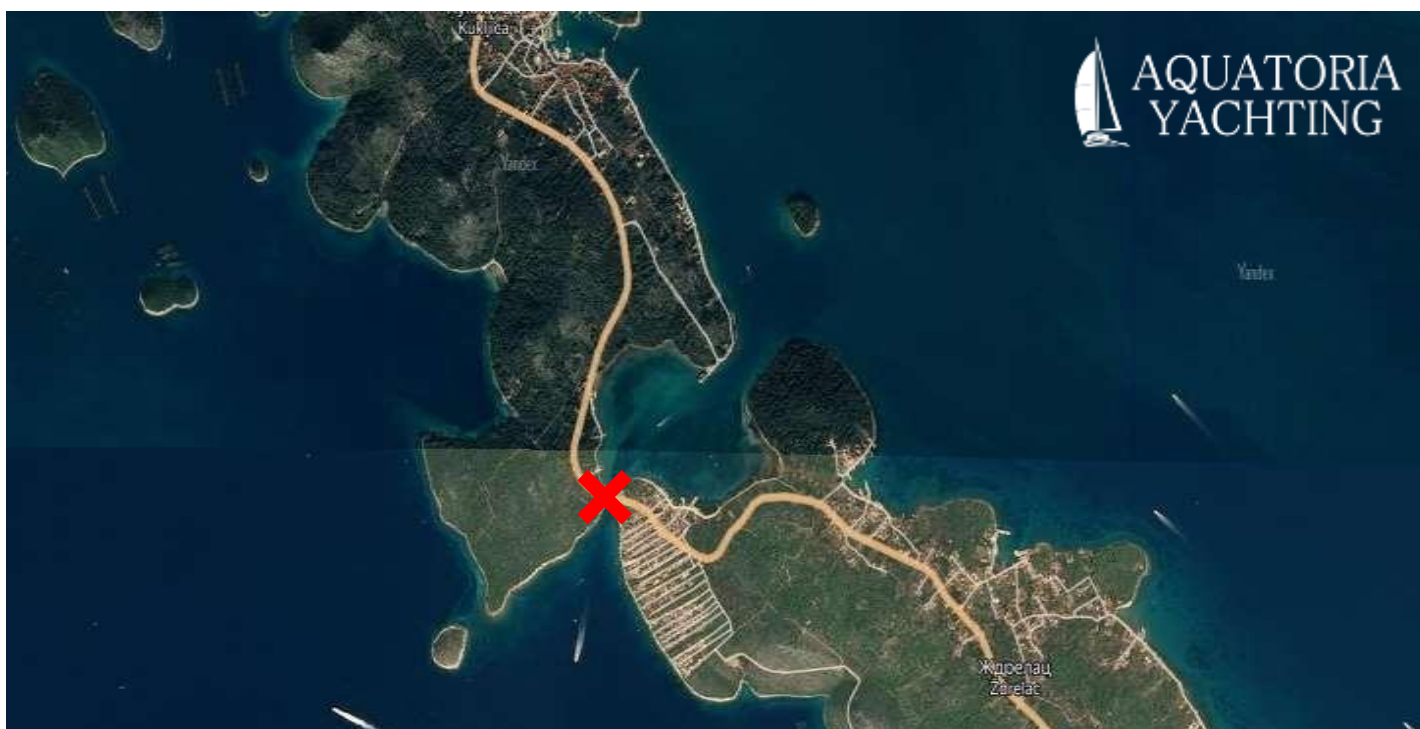
The swimming platform must not be opened during parking or moving on the yacht. Platforms are often damaged by this.

Departing marina in Pirovac

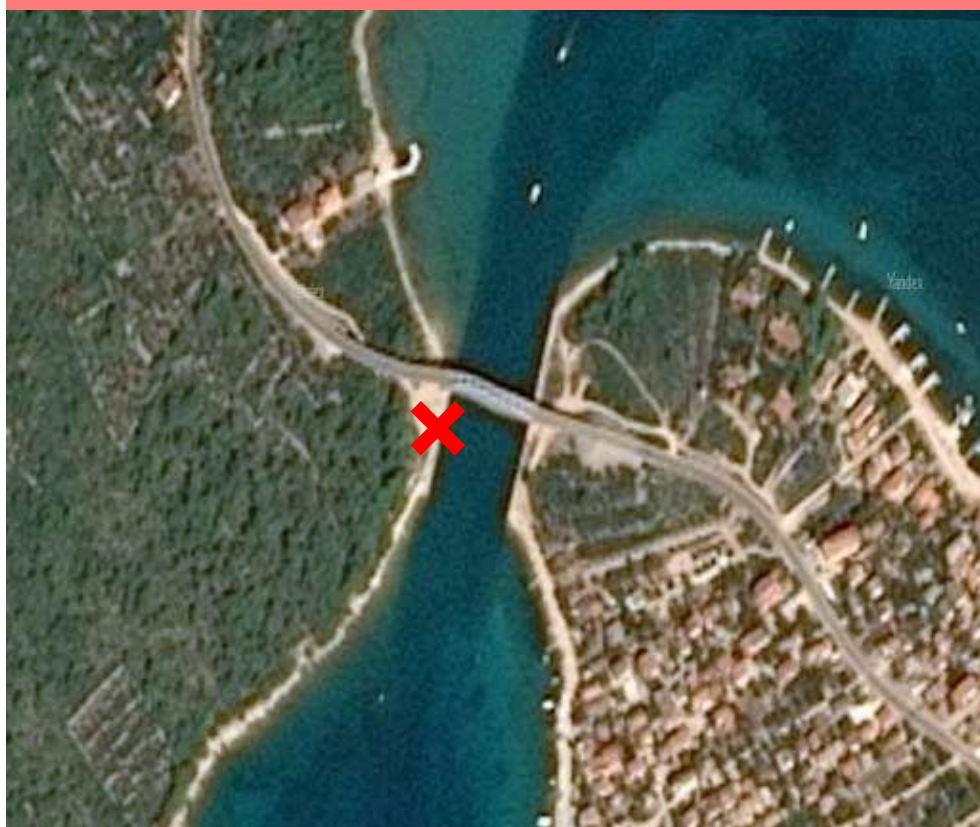


Use only marked passages otherwise the depth will not let you go between other islands. Be careful !

FORBIDDEN TO PASS under Ugljan-Pasman bridge!



Ždrelac Bridge, connecting Ugljan and Pasman islands is rather low – only 16,5 m high. There is no passage for yachts under the bridge!



CROATIAN OFFICE PHONE NUMBER

+385 23 77 70 08

Base manager phone number

+385 95 5331 793

SEA HELP – VIKTORIA ORLIC
(tel. +385 919 112 112 or 0800
112 00 112) (VHF 16)

Coast guard

Response at VHF channel 16



SeaHelp

Rapid response emergency phone:

112 — Emergency operations service

Major emergency phones:

192 — Police

193 — Fire emergency

194 — Ambulance

195 — Rescue service

**In case of emergency
call the charter
company!**



**AQUATORIA
YACHTING**

1) If you crash into another boat while exiting or entering the marina you should:

- Call the captain's office (channel 16)
- Receive contact information of those you've crashed
- Do not leave the place in any case! Stay where you are.
- Try to solve the problem on the spot (be sure to get a note).

2) If any yacht crashed your boat while exiting or entering the marina you should:

- Call the captain's office (channel 16)
- Receive contact information those who hit you
- Do not leave the place in any case! Stay where you are
- Visit to marina office
- Try to solve the problem on board (be sure to get a note)
- Write down the number and yacht name and charter company too.

3) If any yacht crashed your boat outside the marina, you should:

- Call the police (192 or 195) or the captain's office (channel 16)
- Estimate the damage
- Write down the witness contacts
- Write down the number and yacht name and charter company too.

4) If you crashed into someone else's boat outside marina you should:

- Stop
- Call captain's office (channel 16)
- Estimate damage
- Try to solve the problem on board (be sure to get a note)

5) If your boat run aground (sand) you should:

-If you are unable to sail away, call the charter company and ask for help.

6) If you hit a rock (stone) you should:

-Call the captain's office (channel 16)
-Call charter company.

7) If you have serious damages (mast fall, fire) you should:

-Inform the charter company
-Ask for help in transportation (call "SEAHELP"). +385 919 112 112 or 0800 112 00 112

8) In the case of average breakdowns (engine failure, sail break, anchor loss etc.) you should:

-Call the charter company

9) In the case of emergency accidents (human death or serious injures) you should:

-Call rescue service (channel 16, repeat "MAYDAY" - 3 times)
-Call the police.

10) In the case of marine pollution (by you), if the boat sink and is spilling fuel you should:

-Call the captain's office
-Or try to turn off fuel tap.

11) If you are coming late for CHECK OUT you should:

-Call the charter company and inform about it!

**SEAHELP – VIKTORIA ORLIC
(tel. +385 919 112 112 or 0800
112 00 112) (VHF 16)**

Lučka kapetanija	lučki kapetan	voditelj Odjela za inspeksijske poslove	Pomorski promet 00 - 24	telefon/fax
<u>Pula</u> 52100 Pula, Riva 18	Dolores Brenko Škerjanc	tel. 052 535 881	tel/fax 052 222 037 tel. 052 535 870 Pula.pomorskipromet@pomorstvo.hr	052 535 877 052 535 888
<u>Rijeka</u> 51000 Rijeka, Senjsko pristanište 3	Darko Glažar	voditelj Odjela: Vladimir Malnar tel. 051 212 474 fax. 051 212 696	voditelj Odjela: Edo Kovačević tel. 051 214 031 fax. 051 313 265 Rijeka.pomorskipromet@pomorstvo.hr	051 211 422 051 211 537
<u>Senj</u> 53270 Senj, Obala kralja Zvonimira 12	Nenad Bugarin	inspektor: Neven Tomljenović tel. 053 881 301	voditelj Odjela: Danijel Vrzić tel. 053 881 301 senj.pomorskipromet@pomorstvo.hr	053 881 301 053 884 128
<u>Zadar</u> 23000 Zadar, Liburnska obala 8	Alen Rukavina	inspektor: Boris Medić tel. 023 254 886	voditelj Odjela: Denis Livljanić tel. 023 254 880 fax. 023 254 876 Zadar.pomorskipromet@pomorstvo.hr	023 254 888 023 250 235
<u>Šibenik</u> 22000 Šibenik, Obala Franje Tuđmana 8	Robert Baljkas	inspektor: Peroslav Kronja tel. 022 217 217	voditelj Odjela: - tel. 022 217 214 fax. 022 212 626 sibenik.pomorskipromet@pomorstvo.hr	022 217 217 022 217 378
<u>Split</u> 21000 Split, Obala Lazareta 1, p.p. 317	Željko Kuštera	voditelj Odjela: Ivan Paušić, v.d. tel. 021 302 409	voditelj Odjela: Ivica Vuletić tel. 021 362 436 fax. 021 346 555 Split.pomorskipromet@pomorstvo.hr	021 302 400 021 361 298
<u>Ploče</u> 20340 Ploče, Trg kralja Tomislava 24	Joško Nikolić	inspektor: Toni Grgić tel. 020 670 506	voditelj Odjela: Dubravko Paskojević v.d. tel. 020 679 008 020 670 206 Ploce.pomorskipromet@pomorstvo.hr	020 679 008 020 678 621
<u>Dubrovnik</u> 20000 Dubrovnik, Vukovarska 16	Mato Kekez	voditelj Odjela: Igor Jadrušić tel. 020 418 984	voditelj Odjela: Zvonimir Cetinić tel/fax. 020 418 989 020 419 211 Dubrovnik.pomorskipromet@pomorstvo.hr	020 418 988 tel/fax. 020 418 987 020 418 9

CROATIAN OFFICE CONTACTS**OFFICE PHONE NUMBER IN CROATIA**

+385 23 77 70 08

OFFICE ADDRESS

Obala Rtine 1A, 22213 Pirovac,
Croatia

MARINA PIROVAC**BEARINGS**

43°48'58,32" N

15°39'47,65" E

Office location

Aquatoria Yachting office located on the 2st floor in the building, situated in front of A and B piers

Office schedule:

Fri, Sat: 08-20

Sun: 08-12

Mon - Thu: 08-16

EMAIL

info@aquatoria-yachting.com

office@aquatoria-yachting.com

TELEGRAMM

[aquatoriapirovac](https://t.me/aquatoriapirovac)

Skype

Office Aquatoria Yachting

Base manager number

+385 95 5331 793

Marina Pirovac **VHF 17 Channel**

